



## The way wheel loaders work today

Wheel loaders handle many different tasks during a normal working day, but changing hydraulic attachments is still a manual job.

- Leave the cab
- Disconnect / connect hoses
- Handle oily couplings
- Climb back in

It takes time, it interrupts the workflow, and often the right attachment is not used because changing takes too long.

*A modern machine – but still a manual process.*

Steelwrist was established in North America 2017 and is today the leading tiltrotator supplier in the market, with headquarters, manufacturing and warehousing located in Newington, CT. To support the growing demand, a new machining center was inaugurated in February 2026 at the Newington facility, to further increase the local manufacturing and assembly capacity.

Steelwrist supports customers throughout USA and Canada through a wide network of dealers and service partners.

## Steelwrist Inc

240 Pane Road, Newington, CT 06111, USA  
Switchboard 860-999-4202 | Sales 860-999-4202  
Service 860-996-4302 | Spare parts 860-996-4302

[www.steelwrist.com](http://www.steelwrist.com)



# Steelwrist SQL

Turn your wheel loader into a tool carrier

## STEELWRIST SQL WHEEL LOADER AUTOMATIC COUPLER

# From excavators to wheel loaders — proven automatic technology expanded

Steelwrist SQL introduces the fully automatic hydraulic attachment coupler for wheel loaders. Simply pick up your attachment and start working — hydraulics connect automatically without leaving the cab.

No additional control system required — ready for both retrofit and OEM factory installation. Built on the proven Steelwrist SQ technology used on excavators worldwide.

*With one movement you are connected and ready to work.*

### More productivity

- Use the right hydraulic attachment more often during the day
- Minimize downtime between tasks

### Improved safety and comfort

- Stay inside the cab
- No handling of oily couplings
- Reduced risk around the machine

### Higher machine utilization

- One wheel loader can perform more types of jobs — efficiently

Automatic hydraulic connection directly from the cab

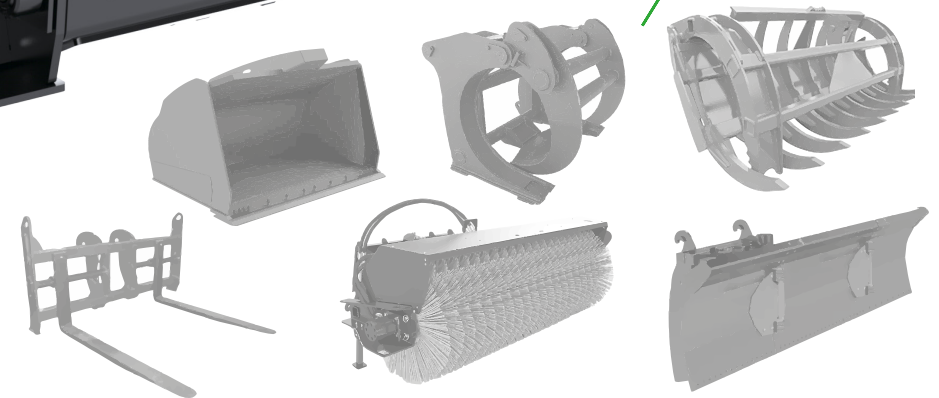
Clean, spill-free hydraulic coupling with every attachment change

Maintains dump height, breakout force and payload

Replaceable wear parts for longer service life

ISO 23727 compliant and ready for OEM or retrofit installation

Transforms the wheel loader into a true multi-tool carrier



*Weld-on SQL adaptors available for easy integration to any hydraulic attachment.*